



oWatchdog Reference Manual

Version 1.1

Index

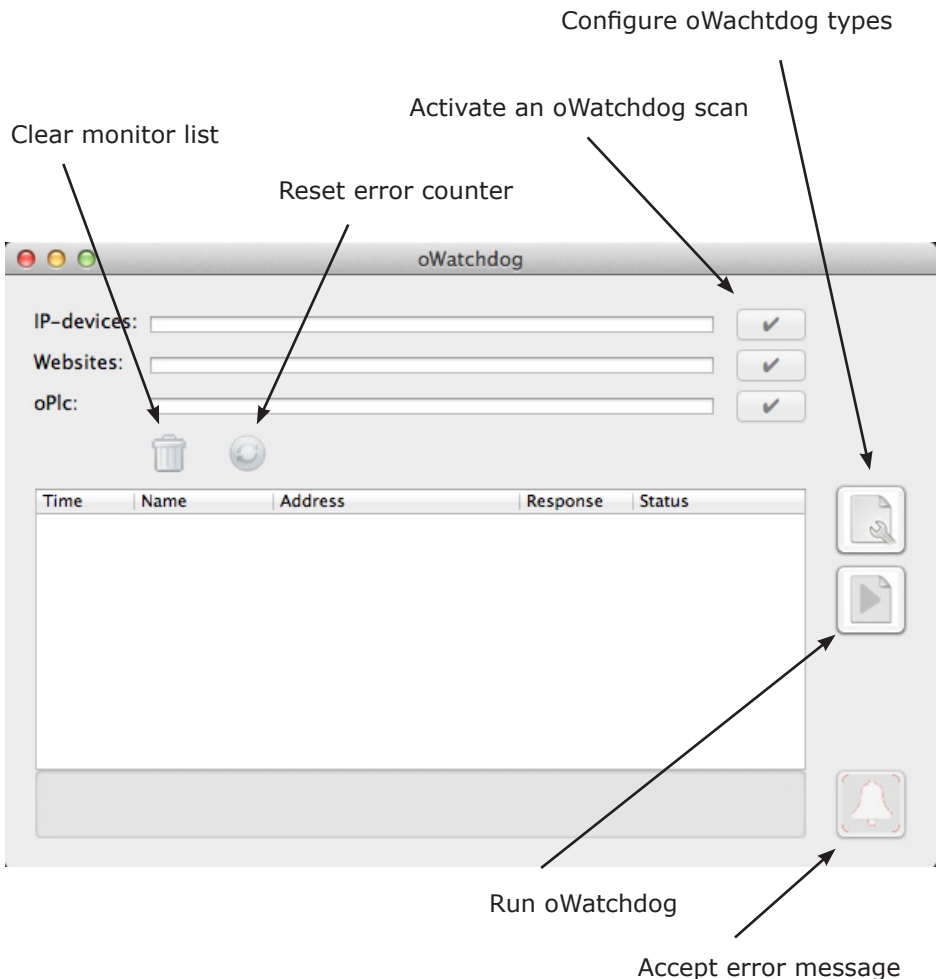
oWatchdog	3
Preferences	4
Configure	5
Configure IP-devices	6
Configure Websites	7
Configure oPlc.....	8
Running oWatchdog	10

oWatchdog

oWatchdog is a unique program that continuously checks network devices like routers, servers, websites and oPlc (Mac Application).

IP-devices can be checked using a ping request, websites by using an URL request and oPlc by using special commands.

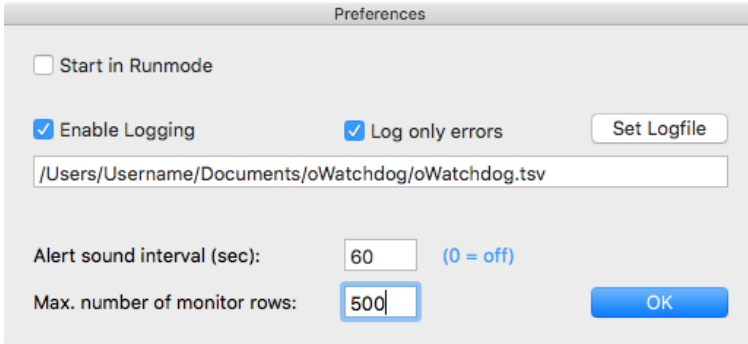
The interval and response time-out can be set as well as the number of retries that are allowed before activating an alarm.



Preferences

You can set preferences to oWatchdog for personal use.

The new settings will become active after the OK button is pressed.



The screenshot shows the 'Preferences' dialog box for oWatchdog. It contains the following elements:

- Start in Runmode
- Enable Logging
- Log only errors
- Set Logfile button
- Text field containing: /Users/Username/Documents/oWatchdog/oWatchdog.tsv
- Alert sound interval (sec): 60 (0 = off)
- Max. number of monitor rows: 500
- OK button

When **Start in Runmode** is checked, oWatchdog will automatically run after the program is started.

When **Enable Logging** is checked, all monitor data is saved in a tsv-file (tab separated values). After changing the logfile location, a new sandbox folder is requested. The logfile can be opened via the File menu.

Log only errors can be used to log the watchdog error messages.


When an error occurred and the alert sound is configured, you can set the **Alert sound interval (sec)** for repeating the sound. A value of 0 is used to turn off the sound.

oWatchdog shows all activity in a monitorlist. The field **Max. number of monitor rows** can be set to a maximum of 99999.


Configure

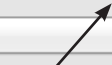
You can configure oWatchdog to check IP-adresses, Websites and oPlc programs. Each type can use an interval, number of retries and an alert sound.

The interval for each type can set between 0 and 9999 sec. A value of 0 will disable the selected watchdog function.

Interval (sec):	<input type="text" value="60"/>	(0 = off)	
Retries:	<input type="text" value="3"/>		
Alert sound:	<input type="text" value="None"/>		

An alarm is generated when an error occurred after the specified number of retries.

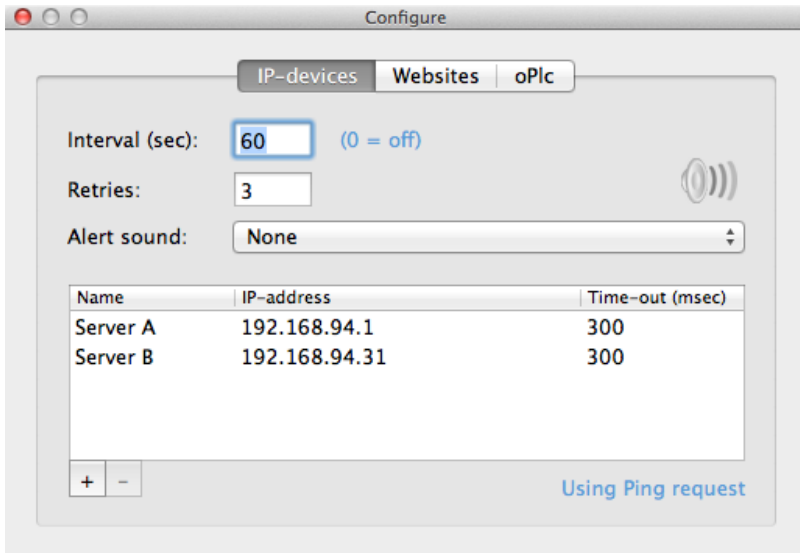
Interval (sec):	<input type="text" value="60"/>	(0 = off)	
Retries:	<input type="text" value="3"/>		
Alert sound:	<input type="text" value="Sound8"/>		



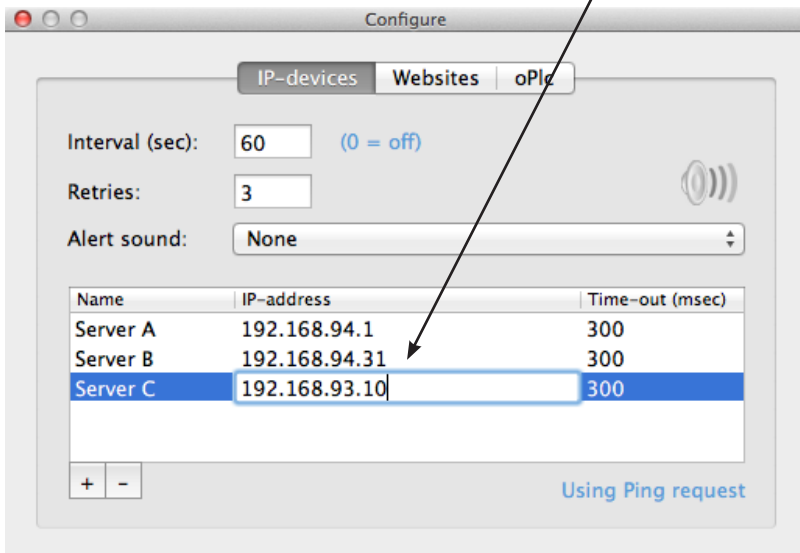
For each type you can select a different sound. To check the sound, click on the button. The sound is repeated with the interval specified by the preference setting.

Configure IP-devices

This type is using a standard **Ping request** to check the selected IP-address.

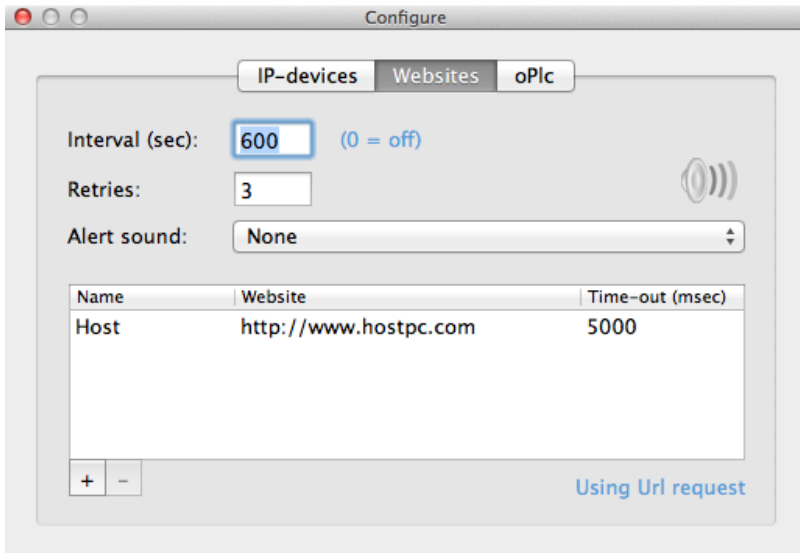


Use the **[+]** button to add a new IP-device and double click on a datafield to modify the data.

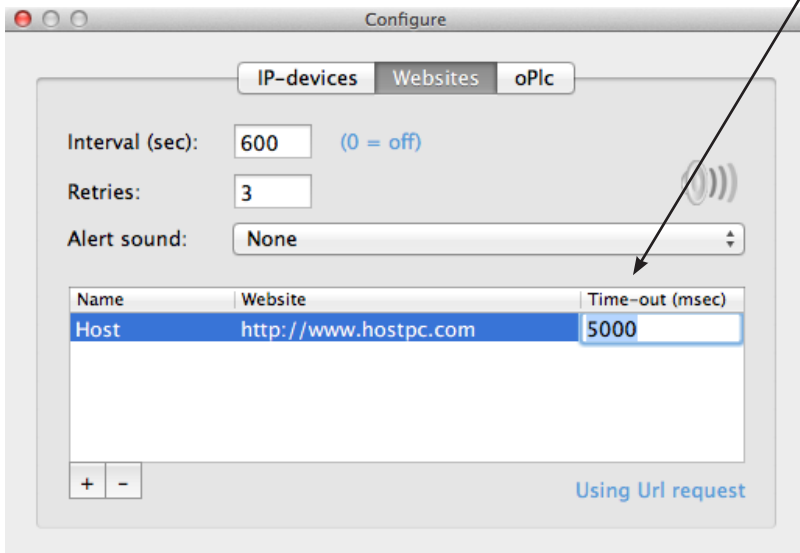


Configure Websites

This type is using a standard **URL request** to check the selected website.

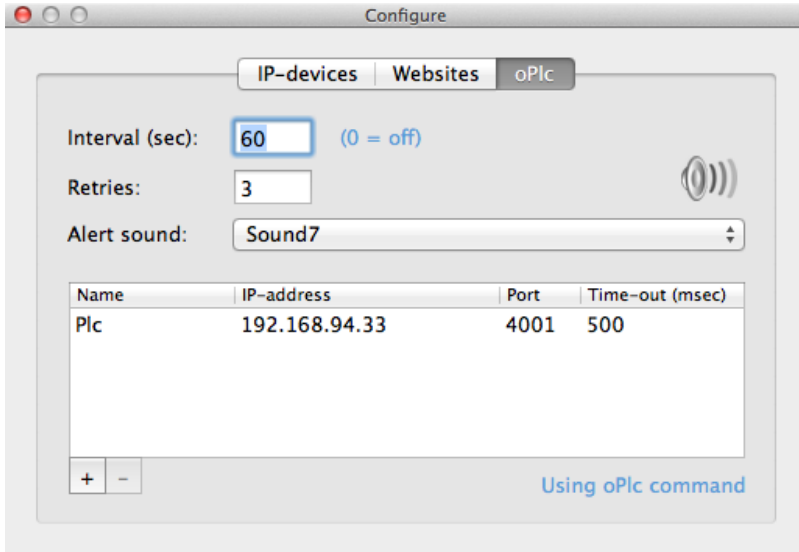


Use the **[+]** button to add a new website and double click on a datafield to modify the data.

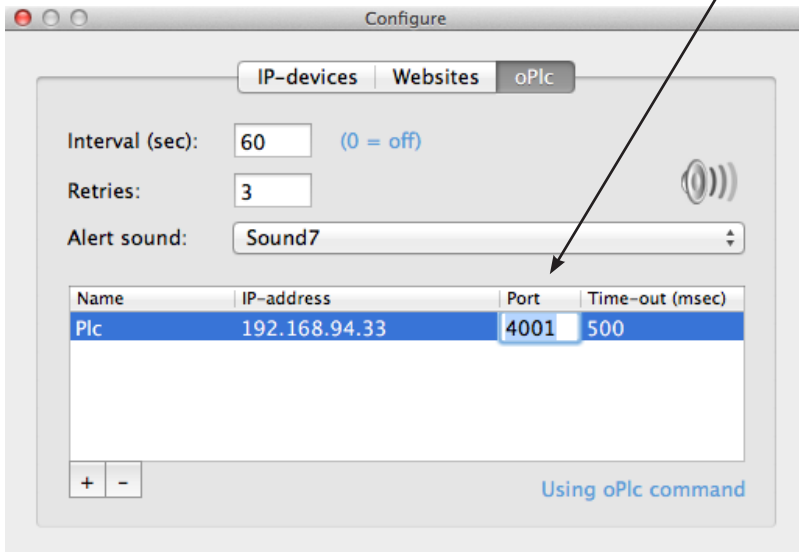


Configure oPlc

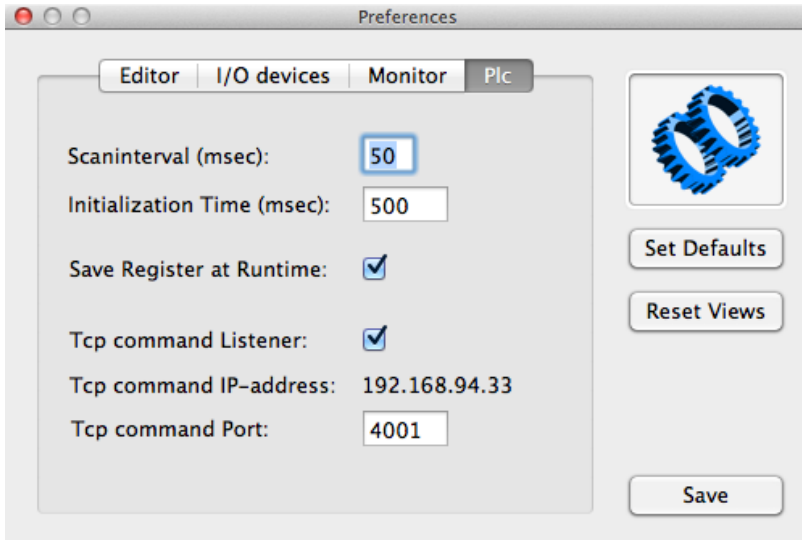
This type is using an oPlc command to check the selected oPlc program.



Use the **[+]** button to add a new oPlc program and double click on a datafield to modify the data.

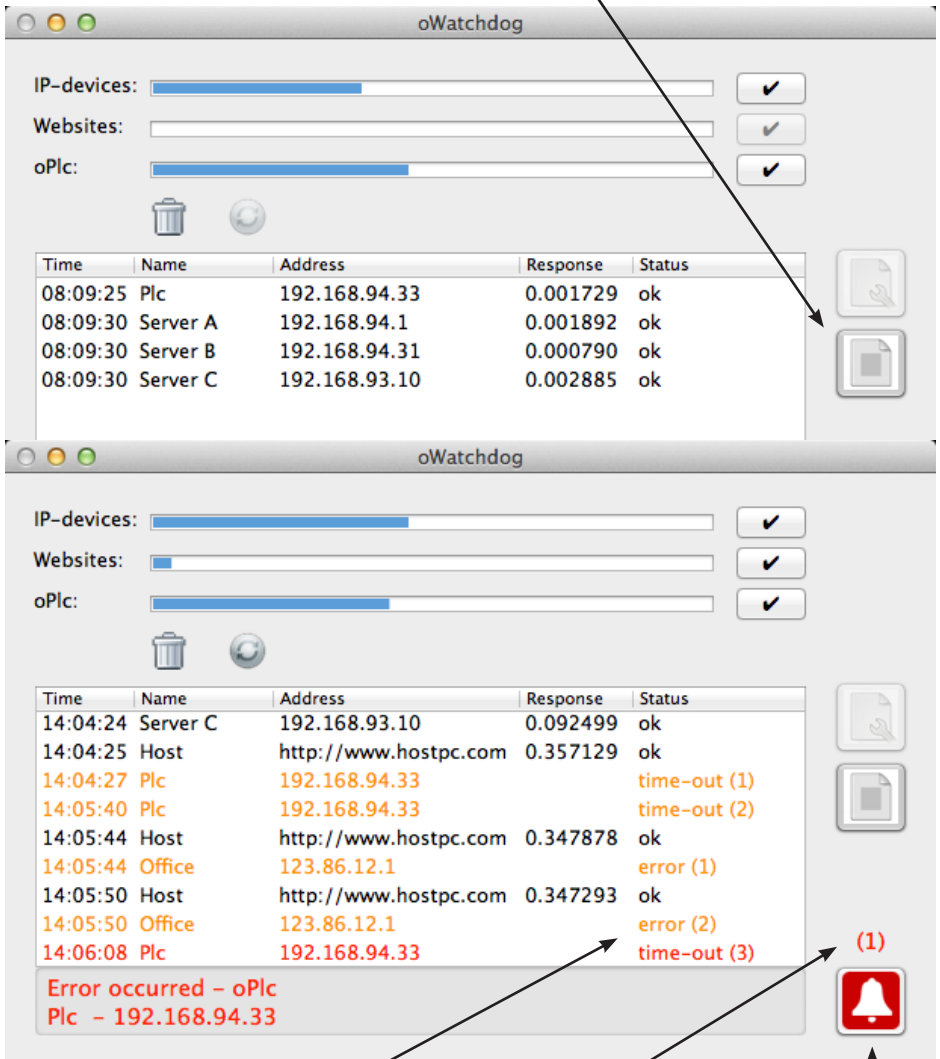


Before you can use oWatchdog to check any **oPlc** program, you have to configure oPlc.



Running oWatchdog

To start oWatchdog, click the **Run** button. Click this button again to stop executing the watchdog functions.



Illegal address

Number of messages

Accept error message

Each time a communication failure is detected and the specified number of retries is not yet reached, a warning (time-out) will appear in the monitoring list.

If the maximum number of retries is reached, the alarm will become active.

If communication to a device restores, the retry counter will be reset and in case of an active alarm the device will show a recovered message.

The screenshot shows the oWatchdog application window. At the top, there are three configuration sections: "IP-devices:" with a blue progress bar and a checkmark button; "Websites:" with an empty field and a checkmark button; and "oPlc:" with a blue progress bar and a checkmark button. Below these are icons for a trash can and a refresh button. The main area contains a table with the following columns: Time, Name, Address, Response, and Status.

Time	Name	Address	Response	Status
08:09:25	Plc	192.168.94.33	0.001729	ok
08:09:30	Server A	192.168.94.1	0.001892	ok
08:09:30	Server B	192.168.94.31	0.000790	ok
08:09:30	Server C	192.168.93.10	0.002885	ok
08:10:25	Plc	192.168.94.33	0.002289	ok
08:10:30	Server A	192.168.94.1	0.002280	ok
08:10:30	Server B	192.168.94.31	0.000554	ok
08:10:30	Server C	192.168.93.10	0.002320	ok
08:11:26	Plc	192.168.94.33	0.002288	ok
08:11:31	Server A	192.168.94.1		time-out (1)
08:11:31	Server B	192.168.94.31	0.003731	ok
08:11:31	Server C	192.168.93.10	0.002531	ok
08:12:26	Plc	192.168.94.33	0.002352	ok
08:12:31	Server A	192.168.94.1		time-out (2)
08:12:31	Server B	192.168.94.31	0.004167	ok
08:12:31	Server C	192.168.93.10	0.020874	ok
08:13:26	Plc	192.168.94.33	0.002461	ok
08:13:31	Server A	192.168.94.1		time-out (3)
08:13:31	Server B	192.168.94.31	0.031508	ok
08:13:31	Server C	192.168.93.10	0.027425	ok
08:14:27	Plc	192.168.94.33	0.002251	ok
08:14:32	Server A	192.168.94.1	0.001815	recovered
08:14:32	Server B	192.168.94.31	0.007259	ok
08:14:32	Server C	192.168.93.10	0.043727	ok

At the bottom left, a red error message reads: "Error occurred - IP-device Server A - 192.168.94.1". At the bottom right, there is a red bell icon with a "(1)" next to it, indicating an active alarm.